

A blue-tinted collage of various industrial and technological images, including factory interiors, machinery, and workers. A large, semi-transparent white arrow points downwards from the top center of the image. The text 'AS VALDEK' is overlaid in white at the bottom center.

**AS VALDEK**



# About Us

We take pride in being a family friendly company. We currently have over 60 children joined as VALDEK members, and counting!



**AS VALDEK** was founded by Mihkel Valdek in the early years of Estonia's regained independence. As many companies back then, we also started in a garage. However, AS VALDEK has preserved the status as a family business even after becoming a larger company.



## “I told you so!”

Our founder Mihkel Valdek's favourite phrase, which is often heard around in the company. While it is said as a playful joke, we believe the statement to be true. His motivation, knowledge and intuition is the success to the growing company.

In 2022 we have 70 employees, 8 of whom are family members. We believe that our people are the biggest asset in our company. Their know-how has an important role in achieving the company vision.

We thrive to provide our customers satisfaction using innovative technologies, while maintaining the family and work friendly business environment we are proud of as a company.





**PALDISKI**  
**25 km**



**TALLINN**  
**26 km**

Facilities are located conveniently between Tallinn and Paldiski, Estonia.



**Keila**  
**Head Office, Productions**

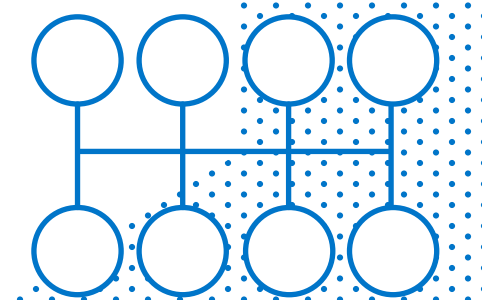


**Tutermaa**  
**Assembly**

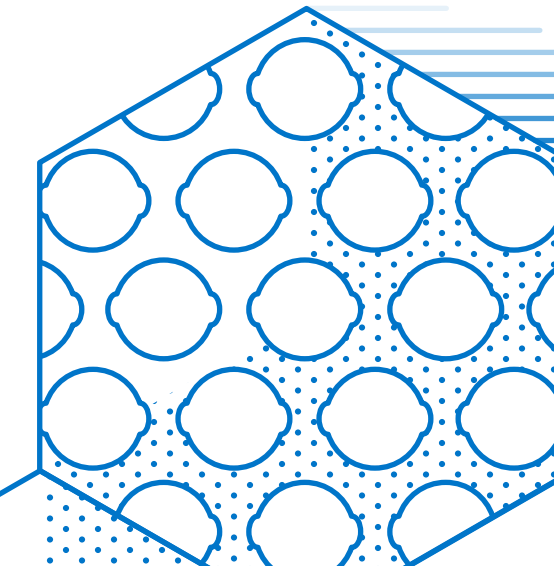


**Väljaotsa, Keila**  
**Future Main Production Facility**  
\*Finished by the end of 2023

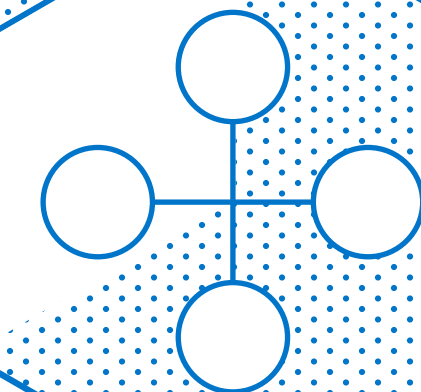
8 Manual Bending Machines



70 Employees



4 Robotic Bending Machines



Punching / Laser  
Capacity 500 T/Month



Average 7-12 Years  
Employee Experience  
at AS VALDEK



Approx. 11.7 Million €  
2022 Turnover



## General Information





## Väljaotsa, Keila

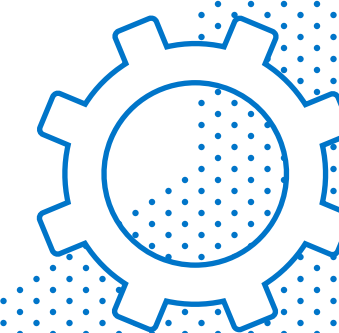
Innovate tomorrow's productions,  
solving tomorrow's needs.



With the first steps of the building construction complete, we plan to move from our current two facilities to the new main production facility by the end of 2023.

m<sup>2</sup>

Land Size: 55 000 m<sup>2</sup>  
Building Area: 8000 m<sup>2</sup>  
Production Area: 6400 m<sup>2</sup>



Production Area:

- Bending
- Punching
- Assembly
- Sub-Operations
- Laser Cutting
- Powder Painting
- Coil-Cutting
- Automated Store System  
etc.

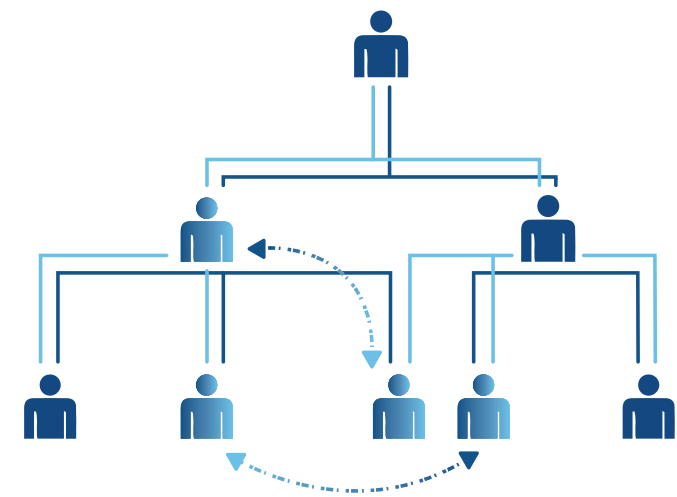
m<sup>2</sup>

Possibility to expand up to  
22 000 m<sup>2</sup>



# Flexibility in VALDEK

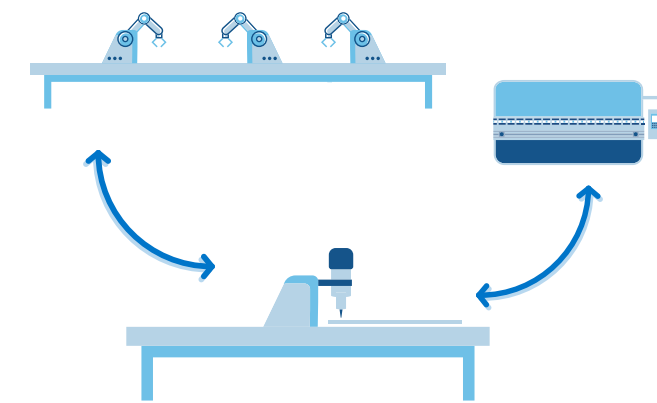
Focus is in flexibility, which is the key word in tomorrow's production.



**Employee Management**  
Less hierarchy, flexible work hours, and expandable work assignments.



**Price**  
Matching the target price with new ideas and different methods of process.



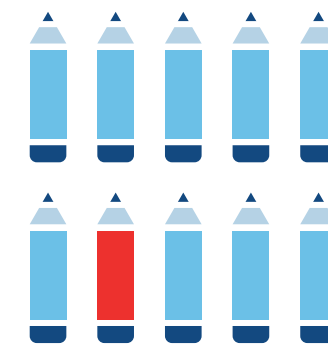
**Process**  
Being creative in the process, resulting multiple outcomes in production.



**Lead Time**  
Lead time 1 day to...



**Reaction Time**  
Respond to customer needs from 1 minute to...



**Quantity**  
Open to variable order quantities; big, small, project base, one time...



**Project Management**  
Wide knowledge in components/accessories supply management, such as wood, plastic, electronic, IT, etc.



# Certificates



ISO 9001

Quality management systems

ISO 14001

Environmental management systems



Gasell 2014/2017

50% profit increase over three years



Family-friendly employer

Participation in creating family and work-friendly work environment and organizational culture



TOP 2021

Estonian business newspaper ranked AS Valdek as one of the top ranked companies of 2021





# References

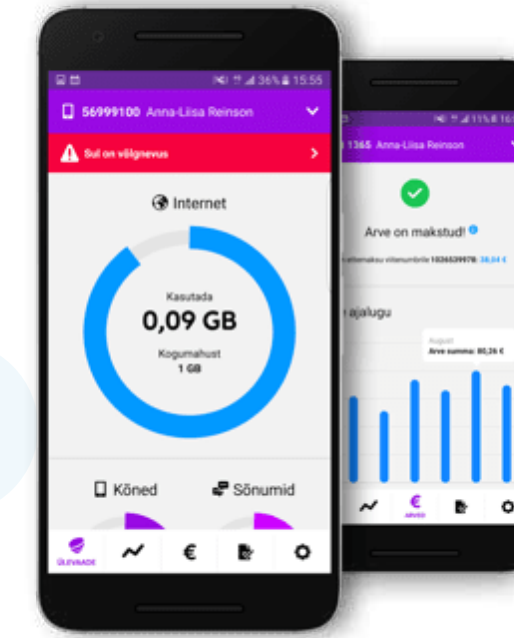
**TAL  
TECH**



Collaboration project with Tallinn  
University of Technology  
and AI & Robotics Estonia



**STARSHIP**



Telecommunication  
inventories



**CLEVERON**



**ABB**

Supplier of Year in Flexibility Category



**ENSTO**



**Kabeldon**



**HARJU ELEKTER**





# Production Areas

## Retail

Shelves systems display pop up, plastic accessories, inventory for retail business, holder terminals.

## Furniture Parts

Chairs tables, cabinets, special profiles.

## Warehouse

Modules shelves systems, drawer, tables, warehouse equipment, special warehouse solutions, accessories.

## Construction

Special panels/wall mount, metal clamps/profiles for constructions, special design solutions.

## Infrastructure

Mail boxes, holders, special solutions, waste bins, metal fences and gates.

## Telecommunications

Cabinets/racks LT1 and LT6, box fibre optic, inventories accessories, fibre optic panels, holders and rack (wall mountings).

## Robotics

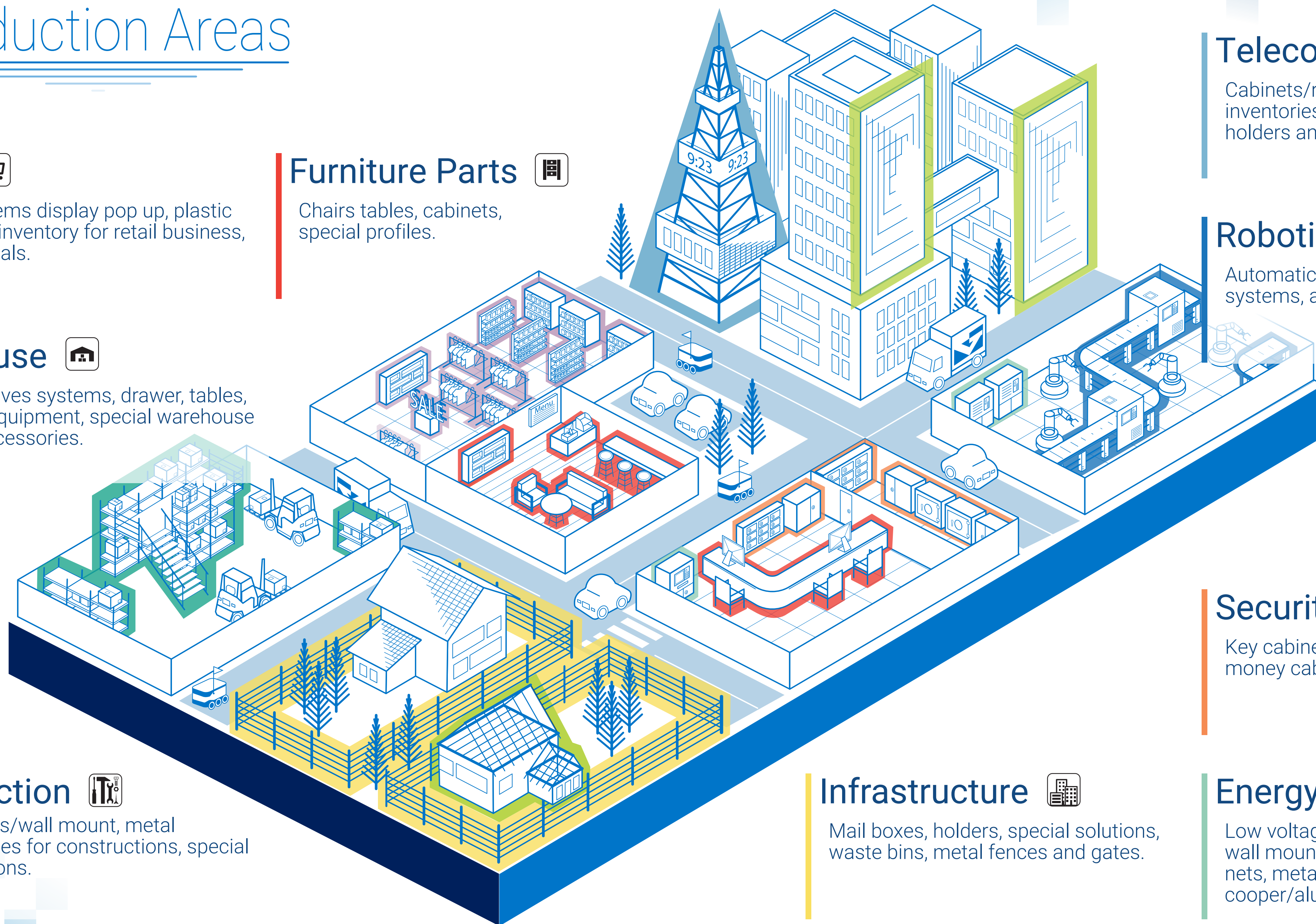
Automatic shelf systems, automated door systems, automated transporters.

## Security

Key cabinets, lock box, medical cabinets, money cabinets.

## Energy

Low voltage (copper bars) switch cabinets, wall mounted cabinets, outdoor/indoor cabinets, metal parts for electrical substations, cooper/aluminium.





## Office

Sales, purchasing, project manager, developing new product, product design, special machinery/equipment design.

## Bending

TRUMPF TruBend Cell 7000, 3 x TruBend Cell 5000, 2 x TruBend 3100, 2 x Cone 900, Baykal Press Brake.



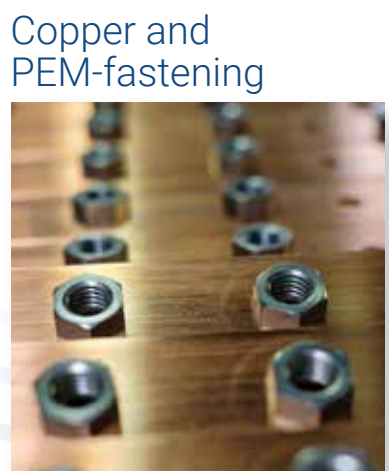
TRUMPF TruBend Cell 5000



NEW!  
TRUMPF TruBend Cell 7000

## Sub Operations

Copper and Aluminium profiles, Welding, Spot-welding, Powder painting, Sanding, Drilling, Tapping, PEM-fastening, Roll-forming, Tox-Joint, special operations.



Copper and PEM-fastening



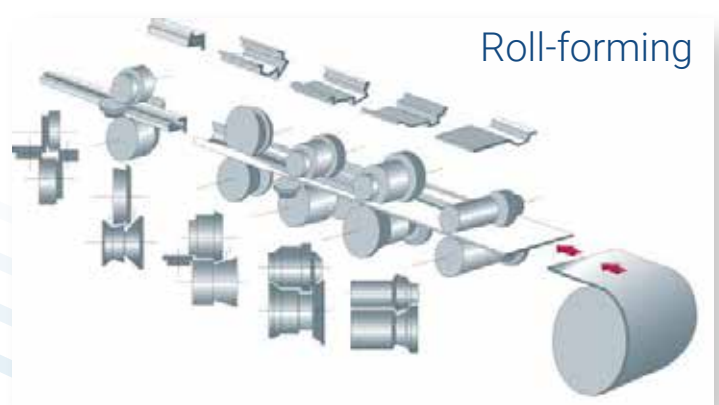
Tapping



PEM-fastening



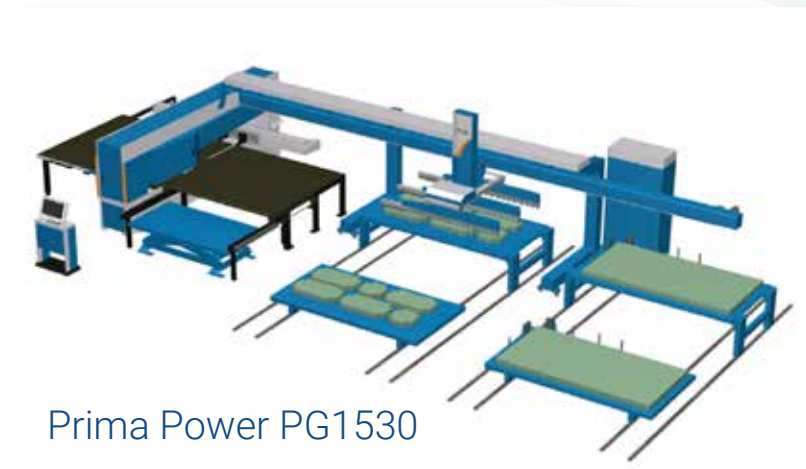
Power painted product



Roll-forming

## Punching / Laser

TruLaser 3030 fiber, Prima Power PG1530+LSD, Boschert Cu-Profi, Tru-Punch 3000 S11, Finnpower X5, Euromac XZ, Euromac.



Prima Power PG1530



TruLaser 3030 fiber



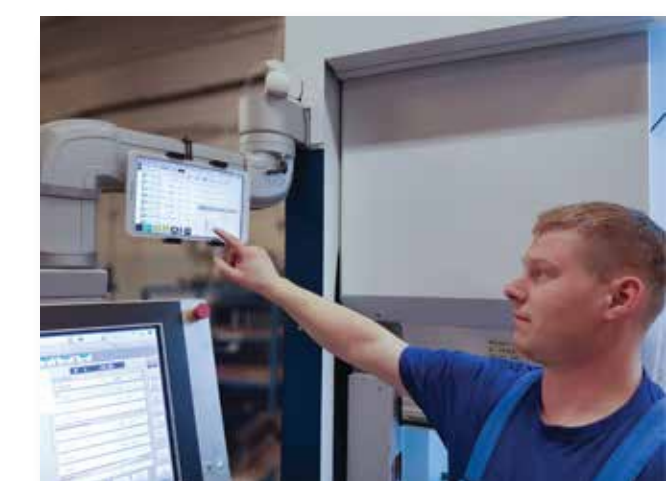
Finnpower X5



TRUMPF TruPunch 3000 S11

## We-Software

We are using in house developed software to bring the industry 4.0 standards closer across all processes.



We-Software App



QR Code Reader

## Storage

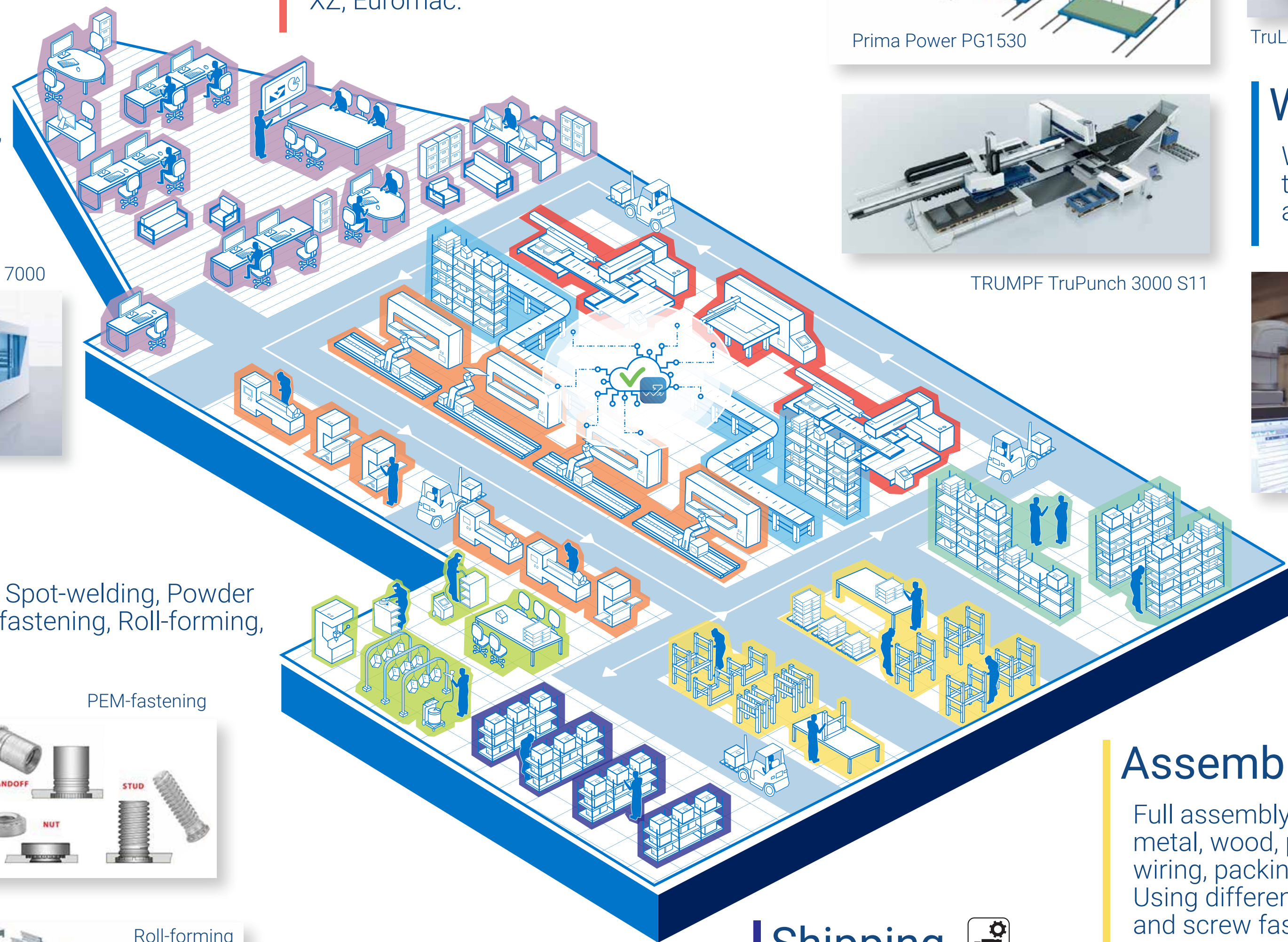
Store produced parts for customers and pre-ordered accessories for future customer orders.

## Assembly

Full assembly, including subcomponents: plastic, metal, wood, paint, electronics, special accessories, wiring, packing. Using different joints: Rivet, rivet-nuts, gluing, bolt and screw fastening.

## Shipping

Insures fast and safe delivery using the We-Delivery App, which sends digitalised delivery papers, including high-quality photos, signatures, and automatic notifications via email.



# Technology



# History and Turnover

## Stage 1 1991-1999

**Starting Up**  
The company started as a one man show by Mihkel Valdek in his own garage.

In 1995 he purchased the production building at Piiri 12A, Kelia to expand the production area from 188 m<sup>2</sup> to 300 m<sup>2</sup>.

## Stage 2 2000-2008

**Catching Up**  
Purchased CNC controlled punching and bending machines. Built our own powder painting line.

Caught up to base technology standards for current sheet metal production companies.

## Stage 3 2009-2016

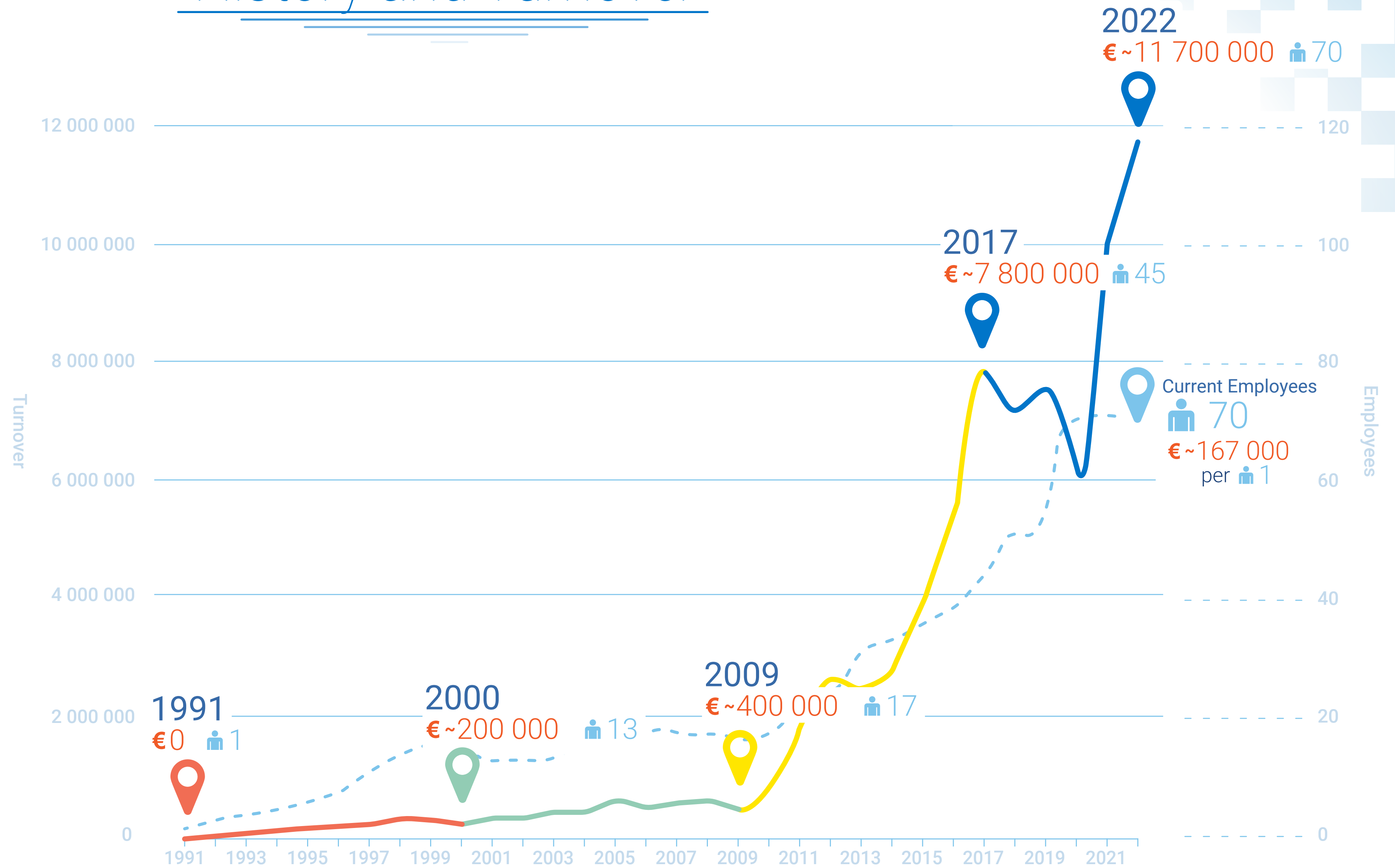
**Changing Up**  
All 3 sons of Mihkel Valdek joined the company with strong ambitions to grow and lead success for the company.

Began new changes such as expanding the production building and integrations of own developed software to main ERP.

## Stage 4 2017-2022

**Looking Up**  
With the expansion of the building complete, it was time to start on longer goals for the future. The future main production facility at Väljaotsa, Keila will be fully operational by the end of 2023.

We are constantly challenging ourselves to think of new ideas and setting new standards to make our company at the front line in the sheet metal production industry.







**Key Implementations and Operations:**



**We-Solutions** was created by AS VALDEK to further advance our future goals with our own ideal principles and innovative technology. It is an ideology of how things should be done.

We-Solutions uses the ideas of Industry 4.0 and 5.0: The importance of people in smart factory.

**Industry 4.0**

- Internet of Things (IoT): Everything is connected
- Edge Computing: Data management
- Digital Twin: 3D modelling in digital environments using real-time data

**Industry 5.0**

- Sociality: Coexistence of human and robot
- Waste: Process waste, urban waste, social waste, physical waste
- Transparency: Simplified and accessible system, high customization



# Contacts



**Priit Valdek**  
CEO

Mobile: +372 5330 4216  
Email: priit@valdek.ee



**Viljar Valdek**  
Development Manager

Mobile: +372 5392 3695  
Email: viljar@valdek.ee



**Priit Valdek**  
Sales Manager

Mobile: +372 5330 4216  
Email: priit@valdek.ee



**Märt Valdek**  
Logistics Manager

Mobile: +372 513 9205  
Email: mart@valdek.ee



**Eero Särak**  
Purchase Manager

Mobile: +372 5399 1105  
Email: eero@valdek.ee



**Sten Paavo**  
Production Manager

Mobile: +372 5567 1888  
Email: sten@valdek.ee



**Mati Õunloo**  
Finnish Client Manager

Mobile: +372 5326 8625  
Email: mati@valdek.ee



**Priit Loo**  
Surface Treatment Manager

Mobile: +372 5392 9486  
Email: priitloo@valdek.ee



**Head Office**

Keila, Piiri 12A  
76610 Harju County,  
Estonia  
valdek@valdek.ee



**Thank you!**